



Developing effective commissioning arrangements for Children's Continuing Care

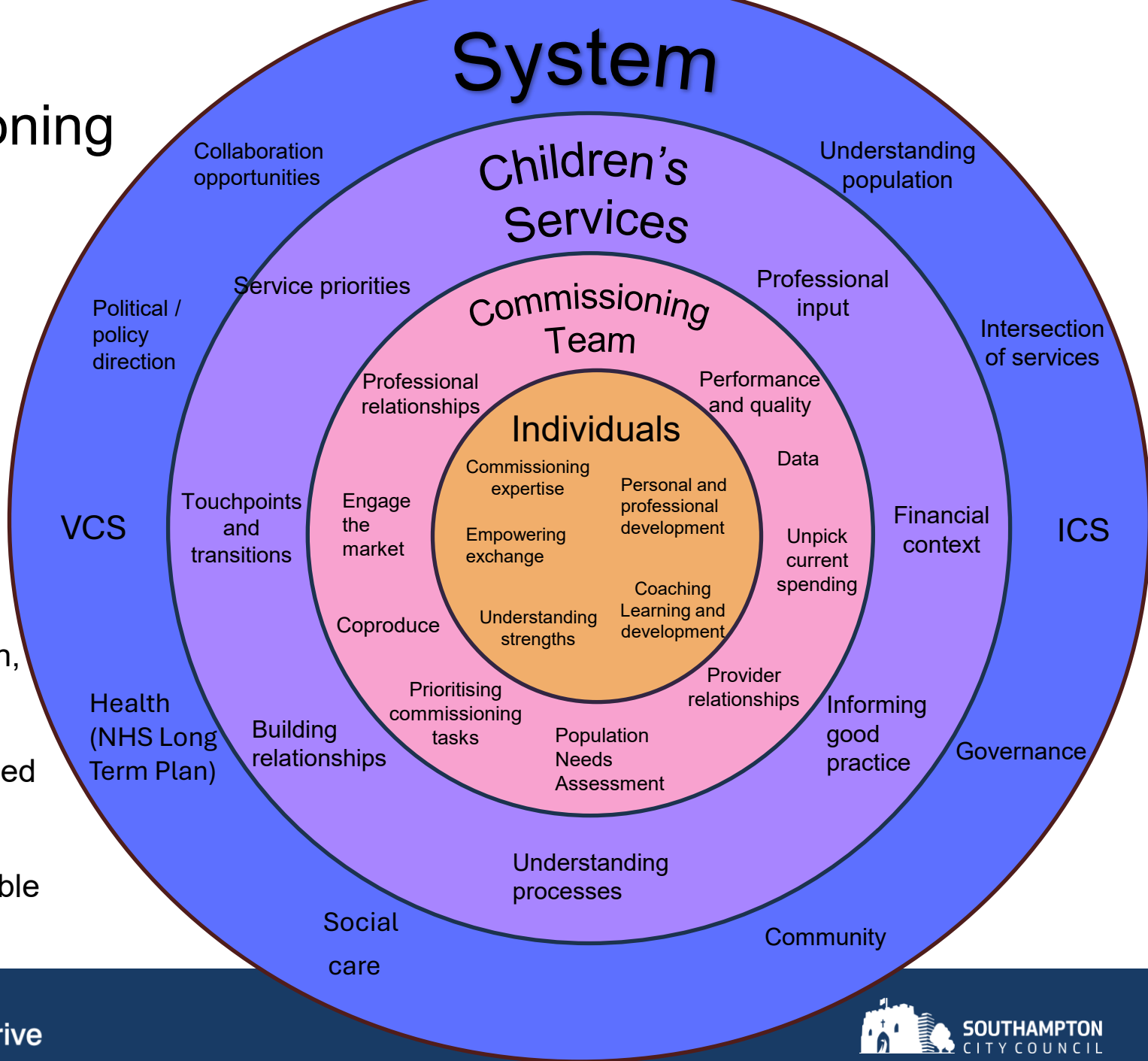
Children's Commissioning Team

Outcomes for CYP

- Good start in life
- Live safely
- Be happy and healthy
- Learn and achieve

How we get there

- Early intervention, prevention and inclusion
- Relationship based work
- Locality working
- A skilled and stable workforce



2024 Pen profile of Southampton



Population of
263,769



Life expectancy years -
Males **77.8** and
Females **82.4**



102,290
households



Average
house price
£231,528



Southampton covers
49.8km²



75% 16-64
yrs olds in
employment



12.6% residents
consider
themselves other
than white British



8 Green
Flag
awards for
parks



Ranked in the **top 10%**
for Good Growth

Over **100** play areas, **24** MUGAs, **6**
Skateparks and **7** tennis courts and
2 golf courses



Support
76
schools



6,000 (4.3%)
residents
claiming
work
benefits



16,304
council
houses



7,615 business
enterprises



37,800 higher
education
students



£652 - average
gross weekly
wage (resident)



200 green spaces cover over **950** hectares (**20%** of
Southampton land) including parks, gardens, recreation
grounds, natural habitats, ecology areas managed for
wildlife (**75** sites), woodlands and greenways

Number of children in
Southampton
aged 0-17

50,373

Percentage of population
who are children
Southampton

19.67%

England

20.8%

Pupils eligible for free school
meals

Southampton

35.1%

England

24.6%

Number of young people in
Southampton
aged 16-17

5,263

Percentage of children 0-15
in low income families
(absolute)
Southampton

21.0%

England

18.7%

Percentage of young people
aged 16-17 that are not in
education, employment or
training
Southampton

4.6%

England

3.2%

Rate of First Time Entrants into
Youth Justice

Southampton

205 per 100k

England

161 per 100k

Number of children
with an Open Child in Need
(CIN) Referral

1,856

Rate per 10k 372 (March 25)

Number of children who are
on a child protection plan

294

Rate per 10k 59 (March 25)

Number of children who are
cared for in Southampton

462

Rate per 10k 93 (March 25)

Number of children who have
an active Education and
Health Care Plan

2769

Rate per 10k 550 (Feb 24)

Case for change

- The purpose and processes of the panel are unclear:
 - Conversations about funding, case management, equipment, and multi-agency intervention all occur in the same meeting.
 - Panel membership does not align with these varied functions.
- Residential placements should be managed outside of the Children's Complex Needs panel.
- The panel's terms of reference and membership need review:
 - Key decision-makers are not present at meetings.
- Decision-making flow issues:
 - Cases are sent to MARP for final decisions, often after review by CNP, causing delays and unnecessary repetition.
 - Delays occur in assessment, funding allocation, and decision-making, unrelated to the outcome of the Pre-Checklist.
- Placement brokerage requires improved oversight of costs and quality.
- Existing forms do not adequately support case discussions prior to panel meetings, and costs are not clearly presented.
- Completion of the Pre-Checklist, particularly regarding health evidence, needs to be addressed. Strengthen the Multi agency meetings/ case planning.

Improvement Journey

- Updated panel terms of reference to ensure decision-makers are included as members.
- Commissioned clinical reviews for placements with high associated costs.
- Initiated data collection to support the funding matrix.
- Developed a complex care pathway for non-continuing care in collaboration with the ICB.
- Enhanced the Dynamic Support Register process.
- Engaged with care providers to strengthen market relationships.
- Collaborated with ICB colleagues to review the pre-checklist for children's continuing care.
- Strengthen the Multi agency care planning
- Identified training needs for social workers; NHS training has been shared, followed by a questions and answered session.